



Extra on Face Reading-MOUTH

## Face/Palm Reading

### General Reading

**Mouth will dictate a person eating habit as well as his or her off spring relationship.**

The saying that you are what you eat is true when come to face reading. Often our eating habit and pattern will determine our physical fitness.

**Sharp mouth** is rather unreliable

Mouth with **bigger edge** is an ideal mouth

**Thin lip** with small mouth is unconvincing

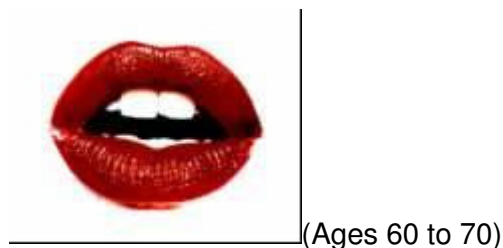
**Short tongue** is hard labor.

**Loose teeth** cannot be trusted

**Bigger teeth** are better than small one.

### Detail Reading

#### Mouth



The mouth governs the period beyond age 60. A good mouth should consist of a balanced shape and lips of equal thickness. The mouth governs a person's language skill, sex drive and cohesiveness with children. The upper lips tell the real love experiences of a person while the lower lips say more about his or her physical sex experiences. People with thick upper lips are sentimental and more emotional as opposed to thick lower lipped persons.



**Lower and upper lips in proportion**

Proportional lower and upper lips signify a well-balanced lip and a good mouth. Such a person is able to handle work and family in a well-rounded manner.

**Big mouth**

Big-mouthed persons enjoy food and like to treat others well. Such persons are daring and able to adapt well to new environments.

**Small mouth**

**Thin lips**

Thin-lipped persons like to talk, socialize, and oftentimes overdo it. Such persons are prone to office grievances and look for quick fixes in life and short-term gratification. These people are quick in thinking and quick in taking action.

**Thick lips**

Persons with thick lips are very sensible and like to think things through thoroughly. In addition, such persons are more sentimental and emotional when dealing with relationships.

**Red lips**

The best color to have in the lip is red. This simply means that this person is healthy, energetic and intelligent with high integrity. A person will achieve more with such lips.

**White lips**

This is the reverse of a red lip, as persons with white lips are said to have bad health due to poor blood circulation.

**Inverted mouth**

Such a person's mouth has both ends pointing downwards. This person is often reactive and pessimistic when approaching life. Thus, such an attitude may lead to lonesome final years.

Please write to [info@misterfengshui.com](mailto:info@misterfengshui.com)

Your letters and comments are always welcomed!

**-Kerby Kuek**

